

2017 Guide to Business Schools for Social & Environmental Impact



Students care about impact issues...

We asked if learning about social/environmental business is a priority for students in graduate school programs.

96% of students responded **yes!**



...but how well are grad school programs responding?

Social Impact
[3.80]

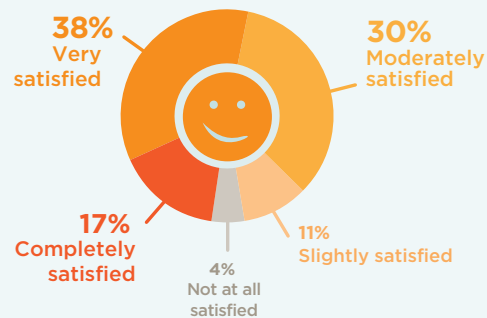


Environmental Sustainability
[3.60]



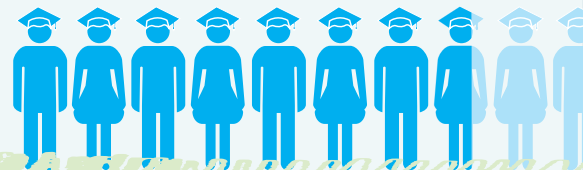
Programs' strengths average ratings.

55% of students are very or completely satisfied with the focus on social/environmental issues in their program's curriculum.



83% of students agree or strongly agree with:

“The administration is committed to including social and environmental themes through my program.”



Students want their impact to continue when they graduate, too:



“ I would take a 15% pay cut...

...to have a job that seeks to make a social or environmental difference in the world

68%